

PERSONAL NAVIGATOR

SATURDAY, DECEMBER 7, 2013

Sunrise: 7:00 a.m. Sunset: 5:40 p.m.
Evening Attire: Cruise Casual
All Ashore: 7:30 a.m.
All Aboard: 4:30 p.m.
Saturday: Sunny High: 78°F/26°C
Sunday: Partly Sunny High: 81°F/27°C

KEY WEST, FLORIDA



Disney DREAMS

AN ENCHANTED CLASSIC

In this spectacular fantasy, a little girl discovers the power of her dreams. Fly through the air with Peter Pan and your imagination, as many Classic Disney Characters spring to life. With a little Faith, Trust and Pixie Dust you'll see that your dreams can come true!


WALT DISNEY THEATRE

Deck 4, Forward

6:15 p.m. & 8:30 p.m.

As a courtesy to all Guests, we kindly advise that the saving of seats is **not** permitted in the Walt Disney Theatre.



 Assistance available at the entrance to the Walt Disney Theatre 30 minutes prior to show time.

Key West Port Information

The U.S. government acquired Key West from Spain in the early 1800s. During those days, most of the isolated islanders made their living as wreckers and pirates, diving for the booty from ships that wrecked on the coral reefs offshore.

In the early 1930's Key West was recognized as a resort town and hotels, restaurants, bars sprang up around the island. For about 6 months business was wonderful until a hurricane tore up the railroad and rendered the island helpless. The State of Florida and the Federal Government took over and began the work of rehabilitation, particularly directed toward development of tourist facilities and attractions.

The number one business here is tourism and a laid back kind of fun. But only in Key West does the sun shine the brightest when it sets. Everyone gathers for the never planned, always varied Sunset Celebration on the Mallory Dock. Once the sun is safely tucked away by jugglers, mimes, musicians and street artists, the city moves to a different beat.

Docking/Anchorage:

Cruise ships tie up at either Mallory Square or Truman Annex. Both ports are west of the island and both are within walking distance of Old Town, the concentration of streets with the most shops, restaurants, bars and sights.



TIL WE MEET AGAIN

FAREWELL SHOW

The world-famous Disney Characters and some of your new friends from the Disney Magic stage shows bid you a charming farewell.

Lobby Atrium,
Deck 3, Midship,
10:00 p.m.

Don't Miss:

Chip-It Golf (12+)

Lobby Atrium, Deck 3, Midship - 3:00 p.m.

It's par for the course for our Guests 12 and older to compete on our special "greens" in this fun tournament.

Holiday Story Time

D Lounge, Deck 4, Midship - 4:30 p.m.

Join us for some classic Yule Tide tales.

80's Flashback (18+)

Fathoms, Deck 3, Forward - 10:45 p.m.

The 80's are back! Join your Cruise Staff team, in testing your 80's knowledge in this high energy 80's revival.

IMPORTANT IMMIGRATION NOTICE

Please be reminded that, as per US Immigration Law, ALL Guests aboard the Disney Magic will be required to present themselves to Customs & Border Protection officials today upon our arrival in Key West. Time and location information will be delivered to your stateroom, however, please remember to bring your Key To The World Card and citizenship documents.

Debarb Talk Broadcast

Important information regarding disembarkation procedures for Miami and your journey home will be covered in this debarkation briefing. The broadcast will be shown continuously on channel 24-2 of your stateroom television for your convenience.

Thank you in advance for completing your comment card.

DINNER MENU

Animator's Palate: Show Dinner
Carioca's: South American Dinner
Lumiére's: French Dinner

DRINK OF THE DAY

Mojito (Alcoholic)
Cranberry Mojito (Non Alcoholic)

IMPORTANT NUMBERS

Fire/Security: 7-3001
Medical Emergency: 7-3000
Health Center: 7-1923

FUN FOR ALL AGES HIGHLIGHTS

CRUISIN' FOR TRIVIA

Promenade Lounge, Deck 3, Aft - 2:30 p.m.

Navigate your way through a round of questions testing your general knowledge.



CHIP-IT GOLF (12+)

Lobby Atrium, Deck 3, Midship - 3:00 p.m.

It's par for the course for our Guests 12 and older to compete on our special "greens" in this fun tournament.

HOLIDAY STORY TIME

D Lounge, Deck 4, Midship - 4:30 p.m.

Join us for some classic Yule Tide tales.

DISNEY VACATION CLUB GROUP PREVIEW

Fathoms, Deck 3, Forward - 4:30 p.m.

Want to learn more about taking magical vacations year after year? Please see a Disney Vacation Club representative on Deck 4, Midship, or call 7-2805 from your stateroom phone for more information about our interactive group presentation.



PLAYHOUSE D LOUNGE

D Lounge, Deck 4, Midship - 5:00 p.m.

Calling our youngest of cruisers! Here is a special playtime that is just for you. Come meet new friends; and join in on the fun as your Cruise Staff team takes you through interactive activities made just for you!

SALUDOS AMIGOS FIESTA

D Lounge, Deck 4, Midship - 10:30 p.m.

Come see what Donald and his friends are up to this time. Bring the family out to this interactive dance party featuring fun Latin music! Your family will learn to Salsa, Merengue and just have a Latin good time!



ADULT ACTIVITY HIGHLIGHTS



SENSES SPA FITNESS CLASSES & SEMINARS

Pathway To Yoga - Senses Spa Fitness Center - 7:30 a.m.

Body Sculpt Boot Camp - Senses Spa Fitness Center - 8:00 a.m.

Eat More to Weigh Less - Senses Spa & Salon - 4:00 p.m.

CLUB
18*21

CLUB 18*21 - FAREWELL

O'Gills Pub, Deck 3, Forward - 10:00 p.m.

SINGLES' MINGLE

Cove Cafe, Deck 9, Midship - 4:45 p.m.

Single, single parent or just traveling alone? Join your Cruise Staff for an informal gathering.



ESPN DREAM TEAM DRAFT DAY - BASKETBALL

O'Gills Pub, Deck 3, Forward - 5:00 p.m.

Join the "Commissioner" and engage in this interactive fantasy basketball draft unlike anything you've ever seen! Can YOU draft the greatest basketball team of All-Time?

LIVE MUSIC WITH CARLOS & MARIA

Lobby Atrium, Deck 3, Midship - 5:15 p.m. & 7:30 p.m.

Promenade Lounge, Deck 3, Aft - 10:45 p.m.

Join Carlos and Maria as they play live for your listening pleasure.

POP!

Fathoms, Deck 3, Forward - 10:15 p.m.

Have you been told you are full of useless information about pop culture? If the answer is "Yes", then you have what it takes to play the high energy game show all about the world of Pop!



\$10,000 FINAL MEGA JACKPOT BINGO

Fathoms, Deck 3, Forward

Card Sales - 7:00 p.m.

Game Starts - 7:30 pm

It's Big, it's Massive, it's Supersized! It's \$10,000 MEGA Jackpot Bingo! Take home \$10,000 if you can cover your card in 46 numbers or less. If not, we carry on to play for the biggest cash prize of the session! Plus, the Snowball Jackpot must be won at this final game of bingo!

YOUTH ACTIVITIES HIGHLIGHTS

DINE & PLAY

A convenience for families dining at 8:15 p.m., our Youth Activities Counselors will be available at 9:15 p.m. at the entrance of Lumina's, Carosa's and Animator's Palace dining rooms to bring registered children to join the fun in the Oceaneer Club and Oceaneer Lab.



Deck 5, Forward (7-1444) 7:30 a.m. - 11:00 p.m.

Infants and Toddlers can enjoy toys and activities at It's a Small World Nursery. Reservations are first come, first served so please stop by!



Deck 5, Midship (7-1445)
(3-12 years old) 7:30 a.m. - 12:00 mid

BECOME IRON MAN!

2:00 p.m.

Do you want to be Iron Man? Marvel's Avengers Academy invites you to virtually suit up in Iron Man's armor for an exciting interactive training gauntlet.

MARVEL AVENGERS ACADEMY

7:15 p.m.

Young Heroes Assemble! S.H.I.E.L.D and The Avengers need your help in defeating the evil Red Skull and his dreaded Cabal.



Deck 5, Midship (7-1445)
(3-12 years old) 9:00 a.m. - 12:00 mid

SUPER SLOPPY SCIENCE

10:00 a.m. & 9:30 p.m.

Join Professor Make-O-Mess in some of the most extreme experiments you will ever see in the world of Super Sloppy Science!

PISTON CUP CHALLENGE

7:00 p.m.

It's Dinoco time and you're part of the pit crew! Design your own race car and see if you've got what it takes to end up in the Winner's Circle!



Deck 2, Midship (7-5816)
(11-14 years old) 10:00 a.m. - 12:00 mid

THAT'S HILARIOUS

8:15 p.m.

Ever wanted to show off your comedy skills? Then be a part of the cast for the crazy improv show "That's Hilarious" and put on a live show for your friends.

HOW WELL DO YOU KNOW YOUR COUNSELOR?

10:00 p.m.

Do you think you know all there is to know about your counselors? Come test out your knowledge with all of your friends!



Deck 11, Midship (7-18577)
(14-17 years old) 10:00 a.m. - 1:00 a.m.

ZOMBIFIED PREMIERE

10:00 p.m.

One time only! Come join us in the Buena Vista Theatre for this exclusive big screen premiere of "Zombified," a film featuring the Teens of Vibe as the cast!

MIX AND MATCH

11:00 p.m.

Try to find your "perfect match" in Disney's very own "Dating" game.

BUENA VISTA THEATRE

Today's Movies

[DOLBY 3D]



8:30 a.m., 5:45 p.m.
& 8:15 p.m.
Duration: 1 hr 48 mins
Rating: PG



10:45 a.m.
Duration: 1 hr 51 mins
Rating: PG-13



1:00 p.m.
Duration: 1 hr 43 mins
Rating: G

[DOLBY 3D]



3:30 p.m.
Duration: 1 hr 48 mins
Rating: PG

[DOLBY 3D]



10:45 p.m.
Duration: 1 hr 51 mins
Rating: PG-13



GAME SHOW

Put your Disney Knowledge to the ultimate test, or play along from our live studio audience!

*D Lounge,
Deck 4, Midship,
7:30 p.m.*



THEME NIGHT

THE 80'S ARE BACK!
Join your Cruise Staff team, in testing your 80's knowledge in this high energy 80's revival.

*Fathoms (18+),
Deck 3, Forward,
10:45 p.m.*

YOUTH ACTIVITIES OPEN HOUSE

Open House is an opportunity for all to come and participate in a variety of exciting activities and free time in the Oceaneer Club, Oceaneer Lab, Edge, Vibe, and It's a Small World Nursery throughout the cruise. During these times secured programming will still be offered in the other venues for those looking to check their children into care.

Vibe 10:00 a.m. - 12:00 p.m.

Edge 10:00 a.m. - 12:00 p.m.

Disney's Oceaneer Lab 1:30 p.m. - 4:00 p.m.

Disney's Oceaneer Club 9:00 a.m. - 11:30 a.m.

MORE TO ENJOY WHILE ONBOARD



VISIT THE FUTURE CRUISE SALES DESK EARLY TODAY
Avoid the evening rush and visit the Future Cruise Sales Desk early for your last chance to save 10% on your next cruise, receive up to a \$200 onboard credit, and pay a reduced deposit. Future Cruise Sales Desk, Deck 4, Midship.



DISNEY VACATION CLUB
Visit the Disney Vacation Club information desk and ask us about show times where you will learn how to turn every vacation into the vacation of a lifetime.



PORT & SHOPPING INFORMATION
Don't miss the incredible shopping in Key West today! Meet Alyssa at Diamonds International #1A on your shopping map between 9:00am - 11:00am and enter to win a beautiful Diamond Heart Pendant! Don't miss Del Sol & Cariloha for all your Key West souvenirs! Make sure to pick up your shopping maps & coupons on the gangway.

SURF AT SEA

\$0.75 per minute or save money by buying blocks of time. \$27.50 for 50 minutes, \$40.00 for 100 minutes and \$75.00 for 250 minutes. Wireless information sheets are available at Guest Services, Deck 3, Midship and the Internet Cafe, Deck 3, Aft. Due to the technology involved and satellite connectivity, the onboard internet service will be noticeably slower than you may be accustomed to and might at times be interrupted or unavailable.

EXPRESS WALK OFF

This option allows you to take your luggage off the ship at your leisure once the ship has been cleared by the local authorities. You won't need to wait for your luggage to enter the terminal and there is no need to claim it inside the terminal building. Please note that no assistance with luggage is provided for this option.

EXPRESS CHECK OUT

If you have a credit card on file, you qualify for express check out. No need to visit Guest Services to settle your account.



TWILIGHT SPECIAL

Choose from:

- A Bliss Massage • Skin Bliss Facial
 - Spa Taster • Reflex Combo • Ionithermic
- Only \$99

Deck 9, Forward - Phone : 7-1465



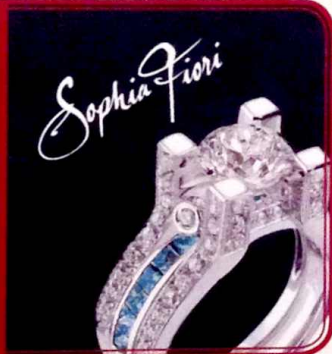
Welcome to the southernmost point of the United States! It's not too late to plan your adventure for today. Why not explore "President Truman's Key West" or tour the old town via trolley or conch train. For more adventure, ask about the White Knuckle Thrill Boat; a wild water ride aboard a high-performance jet boat.

Our team at the Port Adventures Desk, Deck 3 Midship, is available to help you plan your day.

SOFIA FIORI

Industry leaders in vivid colored diamonds, and more specifically Caribbean blue diamonds - one of the single most popular purchases at sea because it reminds everyone of the colors of the breathtaking ocean!

Whitecaps, Deck 4, Forward



SHOPPING

THOMAS KINKADE ART AT THE VISTA GALLERY

Thomas Kinkade, also known as "The Painter of Light," is one Disney's most popular and beloved artist. Visit the Vista Gallery to view some of his original dreamlike interpretations of your favorite Disney characters. Deck 4, Midship.

SOPHIA FIORI LAST OPPORTUNITY

This is your last chance to get your hands on our fantastic collection of Sophia Fiori Couture diamond jewelry, drop in to Whitecaps and receive free sizing on any Sophia Fiori ring! Don't miss out on these exquisite diamonds. Deck 4, Forward.

"TAX FREE SHOPPING? YES, PLEASE!"

That's right! Do all of your tax and duty free shopping right on board by visiting Mickey's Mainsail, Whitecaps, and Sea Treasures.

BRAND NAME WATCHES

Wide range of name brand watch collections. Men's and women's styles are available on watch brands such as Fossil, Kenneth Cole, Guess, and DKNY. Available in Whitecaps, Deck 4, Midship.

NEW DOONEY & BOURKE ONBOARD

Loved for their fine leather and unique designs, Dooney & Bourke creates styles that are sure to inspire. Visit Whitecaps and check out the new Dooney & Bourke handbags designed especially for Disney Cruise Line®. Deck 4, Forward.

PRECIOUS DISNEY PLUSHES

Cuddle up with some of your favorite Disney pals when you swing by Mickey's Mainsail and pick up one of your own soft Plush. From Stitch and Agent Perry to Minnie and Mickey, you'll be sure to find a new cuddly friend to take home. Deck 4, Midship.

Shutters GET THE PICTURE!

Get all your stateroom photos on a disc for one great price. Update and get all your printed photos too!

Portfolio Deal: Purchase any photo package and get \$5.00 off of an 8 x 10 portfolio frame. Every portfolio comes with two FREE 8 x 10 stock photos!

**Please note that photos are available for viewing on our interactive photo kiosks approximately five hours after being taken and are only available for purchase during this cruise.*

IMPORTANT INFORMATION

Security Notice

All Guests (including Children) who wish to disembark or embark the ship are required to present their Key to the World card at the gangway. A photo ID is also required for those Guests who are 18 years of age or older. Guests under the age of 18 are required to have a parent, guardian or other responsible adult sign an authorization form at the Guest Service Desk if they wish to go ashore unaccompanied or with any adult from another stateroom.

Cold and Flu Reminder

Please wash hands frequently and thoroughly, particularly before meals. Contact the Health Center by dialing 7-1923, should anyone in your party become ill.

Inclement Weather

For the safety of all Guests, outdoor events may be changed due to unforeseen weather conditions.

Corridor Quiet Hours

As a courtesy to all our Guests, please recognize quiet hallway hours from 10:00 p.m. til 8:00 a.m.

Environmental Message

With Disney's commitment to the Environment, please refrain from throwing anything over the Ship's side. Thank you.

No Reserved Seats Policy

As a courtesy to all Guests we kindly advise that the saving of seats is not permitted in the Walt Disney Theatre, and the saving of the sun loungers is not permitted on Deck 9 and 10. Items left unattended will be returned to lost and found at Guest Services, Deck 3, Midship.

Smoking

For the comfort of our guests, the following areas are designated as smoking areas:

- Deck 10 forward, Starboard side
- Deck 9, forward, Starboard side at Quiet Cove
- Deck 4, aft, port side from 6:00 p.m. to 6:00 a.m. only (all of Deck 4 is non-smoking from 6:00 a.m. to 6:00 p.m.)

Smoking is prohibited inside all guest staterooms and on stateroom verandahs. Guests found smoking in their staterooms or on their verandahs will be charged a \$250 stateroom recovery fee

Sunscreen Advisory

Don't forget to apply sunscreen and insect repellent when going ashore.

Walt Disney Theatre

Theatrical performances may use artificial fog, strobe lights, pyrotechnics and other special effects. For the safety of our performers and the comfort of those around you, the use of any photography or video recording device or any electronic equipment is prohibited.

Verandah Safety

Please do not leave any combustible materials on your balcony when not present in your stateroom for safety reasons.

Morning	8:30	8:45	9:00	9:15	9:30	9:45	10:00	10:15	10:30	10:45	11:00	11:15	11:30	11:45	12:00	12:15	12:30	12:45	1:00	1:15	1:30				
FUNNEL VISION	Beauty & the Beast (G) Funnel Vision										Finding Nemo (G) Funnel Vision					Mulan (G) Funnel Vision									
BUENA VISTA THEATRE	Frozen (PG) Duration: 1 Hour 48 Minutes										Thor: The Dark World (PG-13) Duration: 1 Hour 51 Minutes											Monsters University (G) - Dolby 3D Duration: 1 Hour 43 Minutes			
CHARACTER	Captain America Disney's Oceaneer Club										Minnie Gazebo, Dk 9											Donald Gazebo, Dk 9			
FUN FOR ALL AGES	Port Adventures - Please check your tickets for meeting times and locations																	Pictionary Challenge Promenade Lounge		Crafts: Paper Plane Making Promenade Lounge					
ADULTS	Friends of Bill W. Animator's Palate										Puzzle Playtime Disney's Oceaneer Club												Become Iron Man! Disney's Oceaneer Club		
VIBE	Books and Magazines available in Cove Cafe.																								
EDGE	Youth Activities Open House										Holiday Crafts												Scavenger Hunt		
OCEANEER LAB	Youth Activities Open House										Pictionary												Celebrity Heads	Holiday Animation Cells	
OCEANEER CLUB	Puzzle Playtime										Become Iron Man!												Puzzle Playtime	Lunch	Open House

Afternoon	1:45	2:00	2:15	2:30	2:45	3:00	3:15	3:30	3:45	4:00	4:15	4:30	4:45	5:00	5:15	5:30	5:45	6:00	6:15	6:30	6:45													
FUNNEL VISION	Mulan (G) Funnel Vision					Wreck-It Ralph (PG) Funnel Vision					The Princess and the Frog (G) Funnel Vision																							
BUENA VISTA THEATRE	Monsters University (G) Duration: 1 Hour 43 Minutes										Frozen (PG) Duration: 1 Hour 48 Minutes										Frozen (PG) Duration: 1 Hour 48 Minutes													
CHARACTER	Daisy Gazebo, Dk 9					Mickey Gazebo, Dk 9					Princess Anna Preludes					Princess Anna Preludes					Goofy Dk 4, Mid													
FUN FOR ALL AGES	Stitch Gazebo, Dk 9					Cruisin' for Trivia Promenade Lounge					Chip It GOLF Lobby Atrium (12+)					Character Dance Party Lobby Atrium					Holiday Story Time D Lounge					Playhouse D Lounge					Live Music with Carlos & Maria Lobby Atrium			
ADULTS	Wii Challenge O'Gills Pub					Eat More to Weigh Less Senses Spa & Salon					Singles' Mingle Cove Cafe					ESPN Dream Team Draft Day - Basketball O'Gills Pub																		
VIBE	Scavenger Hunt					Stop The Boat					Trivia Challenge					Holiday Crafts					Sports Deck Fun					ESPN Dream Team Draft Day								
EDGE	Just Dance					Fifa Challenge					Anyone Can Cook: Cupcakes					Holiday Crafts					Mind Boggles					Youth Activities Open House								
OCEANEER LAB	Youth Activities Open House										Anyone Can Cook												Magic Show		Dinner									
OCEANEER CLUB	Become Iron Man!					King Triton's Royal Court					Magic Show					Memory Wall					Dinner													

Evening	7:00	7:15	7:30	7:45	8:00	8:15	8:30	8:45	9:00	9:15	9:30	9:45	10:00	10:15	10:30	10:45	11:00	11:15	11:30	11:45	12:00																								
FUNNEL VISION	The Princess and the Frog (G) Funnel Vision					Enchanted (PG) Funnel Vision																																							
BUENA VISTA THEATRE	Frozen (PG) Duration: 1 Hour 48 Minutes					Frozen (PG) Duration: 1 Hour 48 Minutes										Thor: The Dark World (PG-13) Duration: 1 Hour 51 Minutes																													
CHARACTER	Princess Anna Preludes					Mickey Dk 4, Mid																																							
FUN FOR ALL AGES	Bingo Pre Sales					\$10,000 Final Mega Jackpot BINGO Fathoms										THE WE MEET AGAIN Lobby Atrium					Farewell Karaoke D Lounge																								
ADULTS	Mickey Mania D Lounge					LIVE Guitar with David Kenny Quiet Cove Pool					Live Piano with Nick Messina Keys					Live Piano with Joe Creamer Keys					Club 18*21 - Farewell O'Gills Pub					Live Music with Dreem Promenade Lounge					Live Music with Carlos & Maria Promenade Lounge					80's/90's Remix with DJ Wendell Fathoms					Live Piano with Nick Messina Keys				
VIBE	Youth Activities Open House										Smoothie Hour												Zombified Premiere					Final Farewell					Mix and Match												
EDGE	Sports Deck Fun					That's Hilarious					How Well Do You Know Your Counselor?					Final Farewell																													
OCEANEER LAB	Piston Cup Challenge					Holiday Crafts										Super Sloppy Science																													
OCEANEER CLUB	Marvel Avengers Academy					Nemo's Coral Reef Adventure										Holiday Party																													

Symbol for activities that will be repeated during the cruise

FOLD

Fold along the dotted lines and take me with you so you don't miss any of the fun!

FOLD

IN THE SPOTLIGHT SERIES

SOAVE IT! SERIES

CLUBHOUSE SERIES

CREATE & IMPROVE SERIES

OPEN HOUSE

STORYBOOK SERIES

SATURDAY, DECEMBER 7, 2013 - KEY WEST, FLORIDA

BUENA VISTA THEATRE

DOLBY 3D DOLBY 3D DOLBY 3D



8:30 a.m., 5:45 p.m. & 8:15 p.m. Duration: 1 hr 48 mins Rating: PG
 10:45 a.m. Duration: 1 hr 51 mins Rating: PG-13
 1:00 p.m. Duration: 1 hr 43 mins Rating: G
 3:30 p.m. Duration: 1 hr 48 mins Rating: PG
 10:45 p.m. Duration: 1 hr 51 mins Rating: PG-13

Character Appearances

CAPTAIN AMERICA
Disney's Oceaneer Club
10:00 a.m.

MINNIE MOUSE
Gazebo, Dk 9 - 12:45 p.m.
Deck 4, Midship - 7:30 p.m.

DONALD DUCK
Gazebo, Dk 9 - 1:15 p.m.

DAISY DUCK
Gazebo, Dk 9 - 1:45 p.m.

STITCH
Gazebo, Dk 9 - 2:15 p.m.

MICKEY MOUSE
Gazebo, Dk 9 - 2:45 p.m.
Deck 4, Midship - 8:00 p.m.

CHARACTER DANCE PARTY
Lobby Atrium - 4:00 p.m.

PRINCESS ANNA OF ARENDELLE
Preludes - 4:30 p.m.,
5:30 p.m. & 7:30 p.m.

PRINCESS AURORA
Deck 4, Midship - 5:30 p.m.

GOOFOY
Deck 4, Midship - 6:00 p.m.

TIL WE MEET AGAIN
Lobby Atrium - 10:00 p.m.



Don't forget your Camera to capture those Magical Moments!
 Check here each day for Character appearances.
 For detailed Character appearance information, please see the Character Information Board in the Lobby Atrium.
 Meet-and-Greets will be advertised for the length of time the line will be open. To avoid disappointment, please meet at start time of appearances.

YOUTH ACTIVITIES THEMED EXPERIENCES

CLUBHOUSE SERIES focuses on movement and features content which appeals to younger children.

JUMP UP! SERIES includes large group games & movement-oriented activities.

CREATE & INVENT SERIES will have a tactile focus allowing children to create and admire their work.

IN THE SPOTLIGHT SERIES focuses on children's stage presence with lots of activities and enthusiasm.

SOLVE IT! SERIES are less active, but will challenge children with problem/solutions-based activities.

YOUTH ACTIVITIES OPEN HOUSE
 Activities for families, adults and children of all ages to enjoy together.

SHIP DIRECTORY

YOUTH ACTIVITIES		
DISNEY'S OCEANEER CLUB	DECK 5, MID	7:30 AM - 12:00 MID
DISNEY'S OCEANEER LAB	DECK 5, MID	9:00 AM - 12:00 MID
EDGE	DECK 2, MID	10:00 AM - 12:00 MID
IT'S A SMALL WORLD NURSERY	DECK 5, AFT	7:30 AM - 11:00 PM
VIBE	DECK 11, MID	10:00 AM - 1:00 AM

POOLS		
*Children under 12 years of age must have adult supervision in all pools.		
AQUADUNK	DECK 10, MID	11:00 AM - 9:00 PM
AQUALAB	DECK 9, AFT	9:00 AM - 9:00 PM
GOOFOY'S POOL	DECK 9, MID	9:00 AM - 6:00 PM 8:00 PM - 10:00 PM
NEPHEWS' SPLASH ZONE	DECK 9, AFT	9:00 AM - 6:00 PM
QUIET COVE POOL	DECK 9, FWD	6:00 AM - 12:00 MID
TWIST 'N' SPOUT	DECK 9, AFT	10:00 AM - 9:00 PM

RECREATION		
PORT ADVENTURES DESK	DECK 3, MID	7:00 AM - 10:00 AM
SENSES FITNESS CENTER	DECK 9, FWD	6:30 AM - 10:00 PM
WIDE WORLD OF SPORTS DECK	DECK 10, FWD	24 HOURS

GENERAL INFORMATION		
BUENA VISTA THEATRE	DECK 5, AFT	SHOWTIMES
DISNEY VACATION CLUB DESK	DECK 4, MID	9:00 AM - 11:00 AM 5:30 PM - 10:00 PM
FUTURE CRUISE SALES DESK	DECK 4, MID	8:30 AM - 9:30 AM 4:00 PM - 6:00 PM 7:30 PM - 10:30 PM
FUNNEL VISION	DECK 9, MID	SHOWTIMES
GUEST SERVICES	DECK 3, MID	24 HOURS
MEDICAL HEALTH CENTER	DECK 1, FWD	9:30 AM - 11:00 AM 4:30 PM - 7:00 PM
PORT & SHOPPING DESK	DECK 3, MID	7:30 PM - 8:30 PM
PRELUDES	DECK 4, FWD	5:30 PM - 8:30 PM
QUARTER MASTERS (ARCADE)	DECK 9, MID	24 HOURS
SENSES SPA AND SALON	DECK 9, FWD	8:00 AM - 10:00 PM
SHOOTERS PHOTO GALLERY	DECK 4, AFT	5:00 PM - 10:30 PM
WALT DISNEY THEATRE	DECK 4, FWD	SHOWTIMES

SHOPPING		
MICKEY'S MAINSAIL	DECK 4, FWD	6:30 PM - 11:00 PM
QUACKS	DECK 9, MID	
SEA TREASURES	DECK 3, FWD	6:30 PM - 11:00 PM
VISTA GALLERY	DECK 4, MID	6:30 PM - 10:00 PM
WHITECAPS	DECK 4, FWD	6:30 PM - 11:00 PM

IMPORTANT NUMBERS
 Fire/Security: 7-3001
 Medical EMERGENCY: 7-3000
 Health Center: 7-1923

DINNER MENU
 Animator's Palate: Show Dinner
 Carioca's: South American Dinner
 Lumiere's: French Dinner
 Dining Times: 5:45pm & 8:15pm

DRINK OF THE DAY
 Mojito (Alcoholic)
 Cranberry No-Jito (Non-Alcoholic)

WEATHER FORECAST
 Saturday: Sunny High: 78 F / 26 C
 Sunday: Partly Sunny High: 81 F / 27 C

Evening Attire: Cruise Casual

DINING & LOUNGES

BREAKFAST		
CABANAS	DECK 9, AFT	6:30 AM - 11:30 AM
DAISY'S DE-LITES	DECK 9, AFT	6:30 AM - 9:30 AM
LUMIERE'S (A-LA CARTE)	DECK 3, MID	7:00 AM - 9:00 AM

LUNCH		
CABANAS	DECK 9, AFT	11:30 AM - 3:00 PM
DAISY'S DE-LITES	DECK 9, AFT	11:00 AM - 6:00 PM
LUMIERE'S	DECK 3, MID	12:00 PM - 1:30 PM
PETE'S BOILER BITES	DECK 9, AFT	11:00 AM - 6:00 PM
PINOCCHIO'S PIZZERIA	DECK 9, MID	11:00 AM - 6:00 PM

DINNER		
ANIMATOR'S PALATE	DECK 4, AFT	5:45 PM & 8:15 PM
CARIOCA'S	DECK 3, AFT	5:45 PM & 8:15 PM
LUMIERE'S	DECK 3, MID	5:45 PM & 8:15 PM
PALO (FOR RESERVATIONS CALL 7-6843)	DECK 10, AFT	6:00 PM - 8:30 PM
PETE'S BOILER BITES	DECK 9, AFT	6:00 PM - 10:00 PM

LATE NIGHT SNACKS		
O'GILLS PUB	DECK 3, FWD	10:45 PM - 11:45 PM
PINOCCHIO'S PIZZERIA	DECK 9, MID	9:30 PM - 12:00 MID
PROMENADE LOUNGE	DECK 3, AFT	10:45 PM - 11:45 PM

ADDED FEATURES		
EYE SCREAM	DECK 9, AFT	11:00 AM - 11:00 PM
FROZONE TREATS	DECK 9, AFT	11:00 AM - 9:30 PM
BEVERAGE STATION	DECK 9, AFT	24 HOURS
ROOM SERVICE	DIAL 7-4330	CLOSES AT 1:00 AM

ENTERTAINMENT - LOUNGES - BARS		
Adults must be 21 and older to consume alcoholic beverages.		
AFTER HOURS	DECK 3, FWD	(AFTER 9:00 PM. ADULTS ONLY)
COVE CAFE (18+)	DECK 9, MID	6:30 AM - 12:00 MID
FATHOMS (18+)	DECK 3, FWD	7:00 PM - 2:00 AM
INTERNET CAFE	DECK 3, AFT	24 HOURS
KEYS (18+)	DECK 3, FWD	5:30 PM - 12:30 AM
O'GILLS PUB (18+)	DECK 3, FWD	1:00 PM - 12:30 AM
PRELUDES	DECK 4, FWD	5:30 PM - 8:30 PM
PROMENADE LOUNGE	DECK 3, AFT	9:00 AM - 12:00 MID
PINOCCHIO'S PIZZERIA	DECK 9, MID	9:30 AM - 12:00 MID
SIGNALS (18+)	DECK 9, FWD	10:30 AM - 10:30 PM
D LOUNGE	DECK 4, MID	SHOWTIMES

Public Health Advisory: Consuming raw or undercooked meats, poultry, seafood, shellfish, or eggs may increase your risk for foodborne illness, especially if you have certain medical condition.

All Ashore: Approx. 7:30 a.m.
All Aboard: 4:30 p.m.

Ship's Agent In Key West
 Caribe Nautical Services, Inc. P.O. Box 285, Key West, FL 33041,
 Tel: 305-294-3288 or 305-797-0850